

Рис. 37.

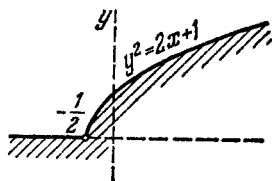


Рис. 38.

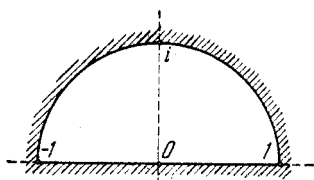


Рис. 39.

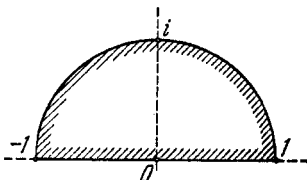


Рис. 40.

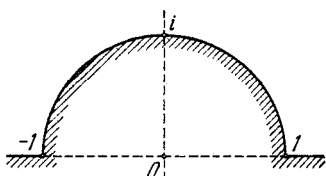


Рис. 41.

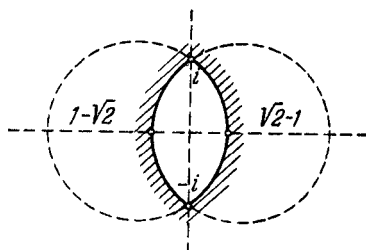


Рис. 42.

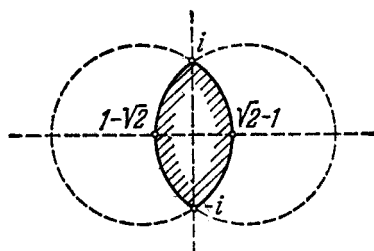


Рис. 43.

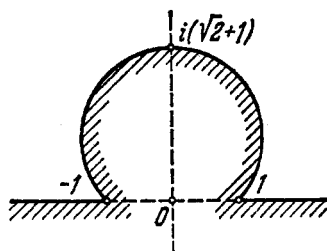


Рис. 44.

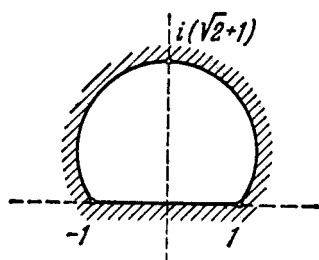


Рис. 45.

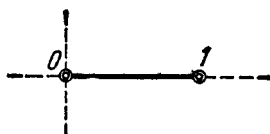


Рис. 46.

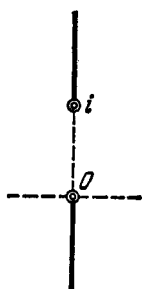


Рис. 47.

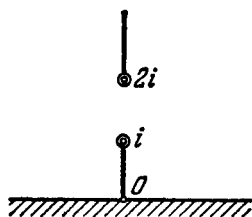


Рис. 48.

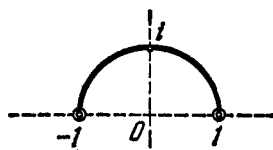


Рис. 49.

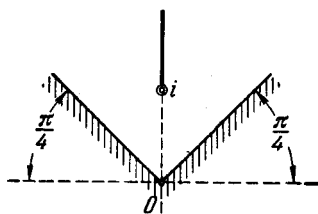


Рис. 50.

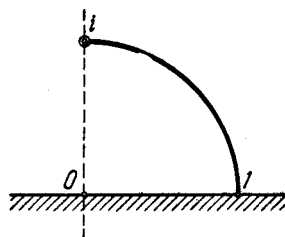


Рис. 51.

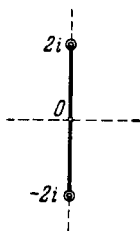


Рис. 52.

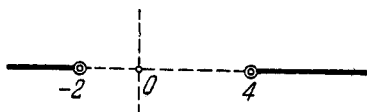


Рис. 53.

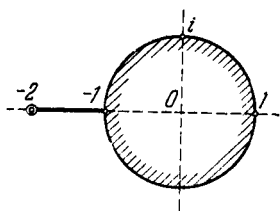


Рис. 54.

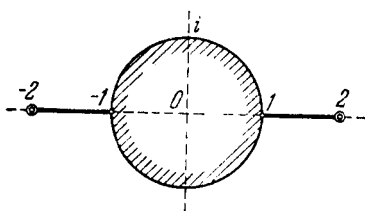


Рис. 55.

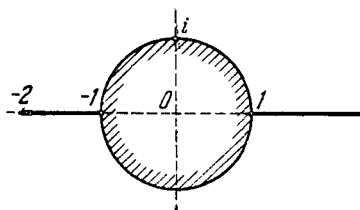


Рис. 56.

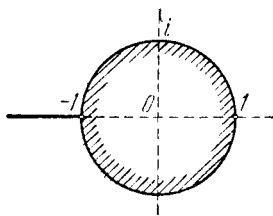


Рис. 57.

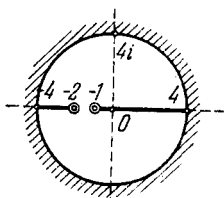


Рис. 58.

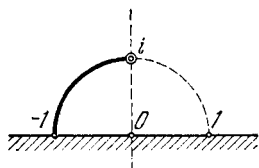


Рис. 59.

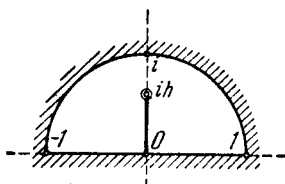


Рис. 60.

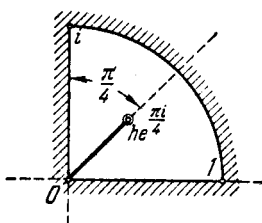


Рис. 61.

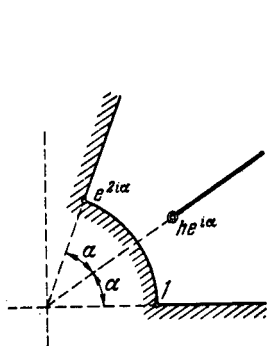


Рис. 62.

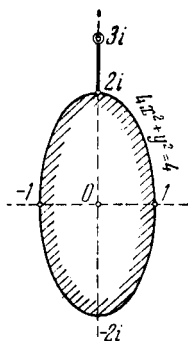


Рис. 63.

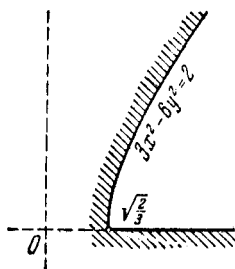


Рис. 64.

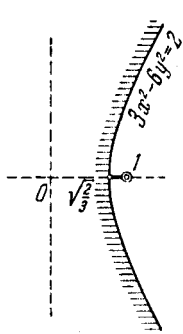


Рис. 65.

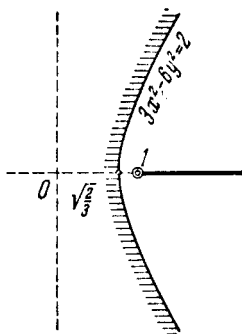


Рис. 66.

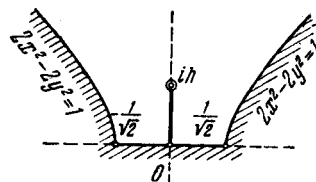


Рис. 67.

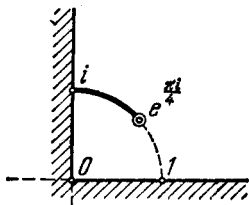


Рис. 68.

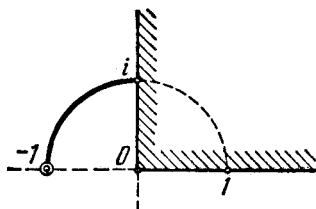


Рис. 69.

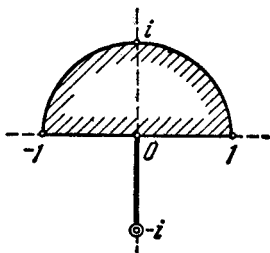


Рис. 70.

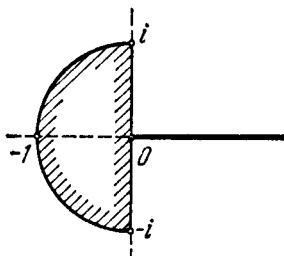


Рис. 71.

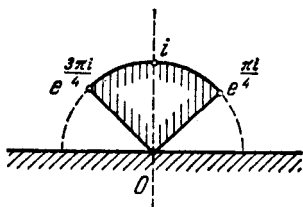


Рис. 72.

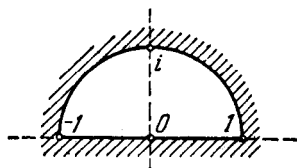


Рис. 73.

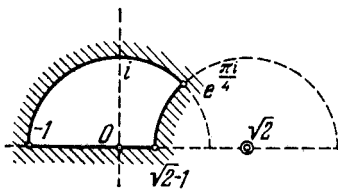


Рис. 74.

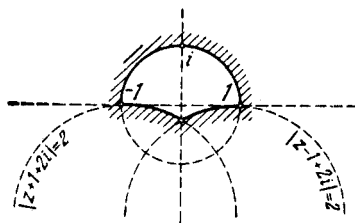


Рис. 75.

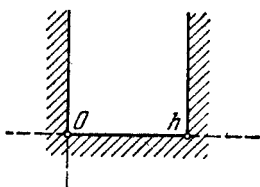


Рис. 76.

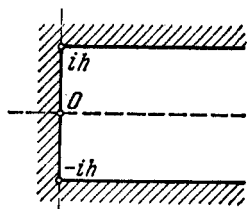


Рис. 77.

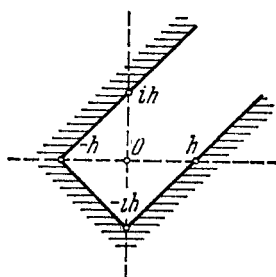


Рис. 78.

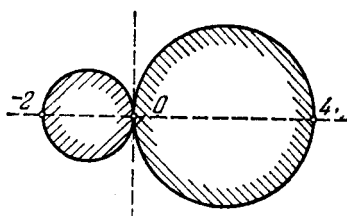


Рис. 79.

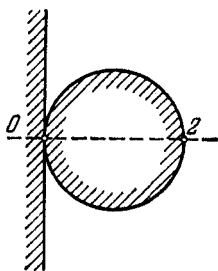


Рис. 80.

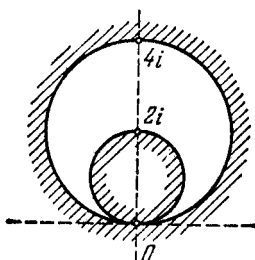


Рис. 81.

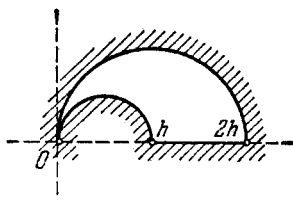


Рис. 82.

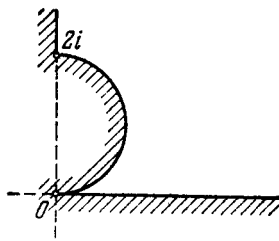


Рис. 83.

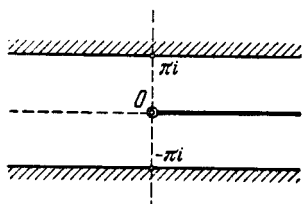


Рис. 84.

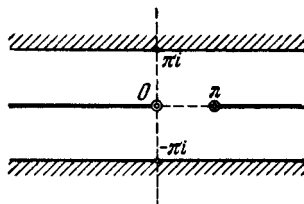


Рис. 85.

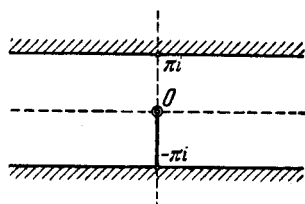


Рис. 86.

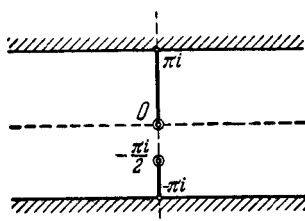


Рис. 87.

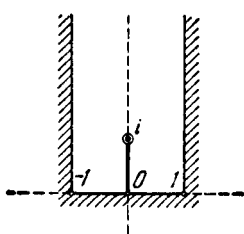


Рис. 88.

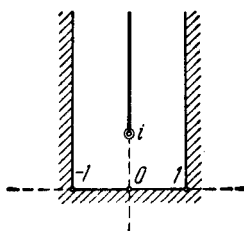


Рис. 89.

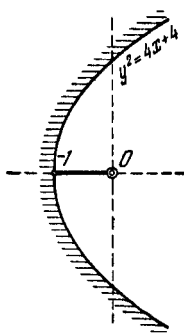


Рис. 90.

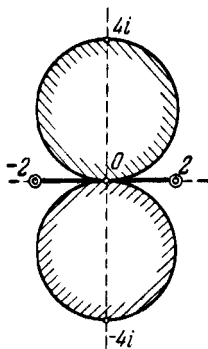


Рис. 91.

**35.29.** Найти какие-либо функции  $w(z)$ , осуществляющие конформные отображения областей, изображенных на рис. 76—91, на полуплоскость  $\text{Im } w > 0$ .

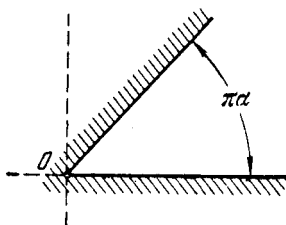


Рис. 92.

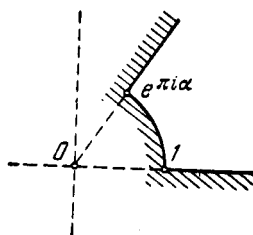


Рис. 93.

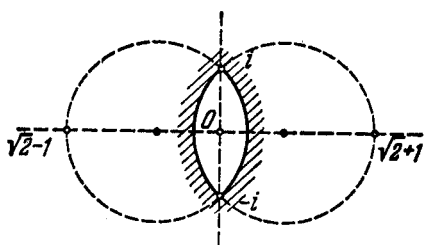


Рис. 94.

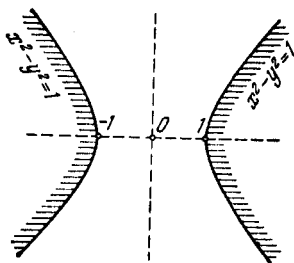


Рис. 95.

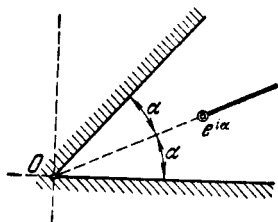


Рис. 96.

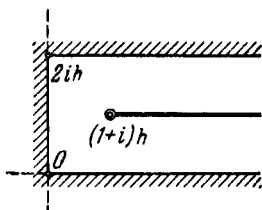


Рис. 97.

**35.30.** Найти какие-либо функции  $w(z)$ , конформно отображающие области, изображенные на рис. 92—97, на полосу  $0 < \text{Im } w < 1$ .

**35.31.** Найти функцию  $w(z)$ , конформно отображающую полосу  $|\text{Im } z| < \pi$  на полосу  $|\text{Im } w| < \pi$  и удовлетворяющую условиям

$$w(\pi i) = +\infty, \quad w(+\infty) = -\pi i, \quad w(-\pi i) = -\infty.$$

**35.32.** Найти функции  $w(z)$ , конформно отображающие перечисленные ниже области  $D$  на прямоугольник

$$0 < \text{Re } w < 1, \quad 0 < \text{Im } w < a,$$